

# CHANGE IN HEALTHCARE PRICES OVER TIME

## 2008

## 2018

PERCENT INCREASE

### SERVICE

#### INPATIENT ADMISSION

The cost of inpatient hospital admissions for surgical and medical care in large employer plans nearly doubled from 2008 to 2018.



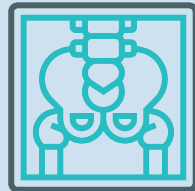
\$25,054

\$47,345



#### FULL KNEE OR HIP REPLACEMENT

The average cost of an inpatient admission for full knee or hip replacement in large employer plans increased 38% from 2008 to 2018.



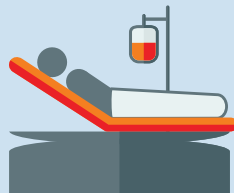
\$25,601

\$35,263



#### APPENDECTOMY

The average cost of inpatient admissions for a laparoscopic appendectomy in large employer plans nearly doubled from 2008 to 2018.



\$11,929

\$23,385



#### GALLBLADDER REMOVAL

The average cost of an inpatient admission for laparoscopic gallbladder removal surgery (cholecystectomy) in large employer plans increased 140% from 2008 to 2018.



\$15,900

\$38,233



Source: McDermott, Daniel, et al., How Costly are Common Health Services in the United States?, Peterson-KFF Health System Tracker. Found at <https://www.healthsystemtracker.org/chart-collection/how-costly-are-common-health-services-in-the-united-states/#item-start>