

LOW-VALUE CARE

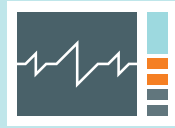
.VS

HIGH-VALUE CARE

EXAMPLES



Unneeded diagnostic testing



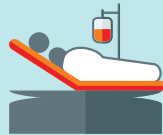
Unneeded imaging



Bloodwork for low-risk surgery



Use of branded drugs when generics are available



Elective/unwarranted C-sections

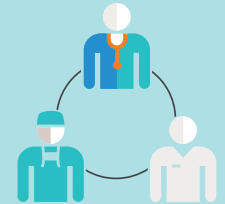
EXAMPLES



Getting a flu shot



Cancer screening when appropriate



Coordinating care for complex patients




Prenatal care



Eye screening for diabetics



Spending wasted on low-value care is estimated to be more than \$340 billion each year.

Providing more high-value care could avoid costly care later, saving more than \$55 billion each year. 

For details on the strategies, go to:

HEALTHCAREVALUEHUB.org/low-vs-high-value-care